



# Bolton Outdoors and Patterdale Hall Daily Outdoor learning Challenge

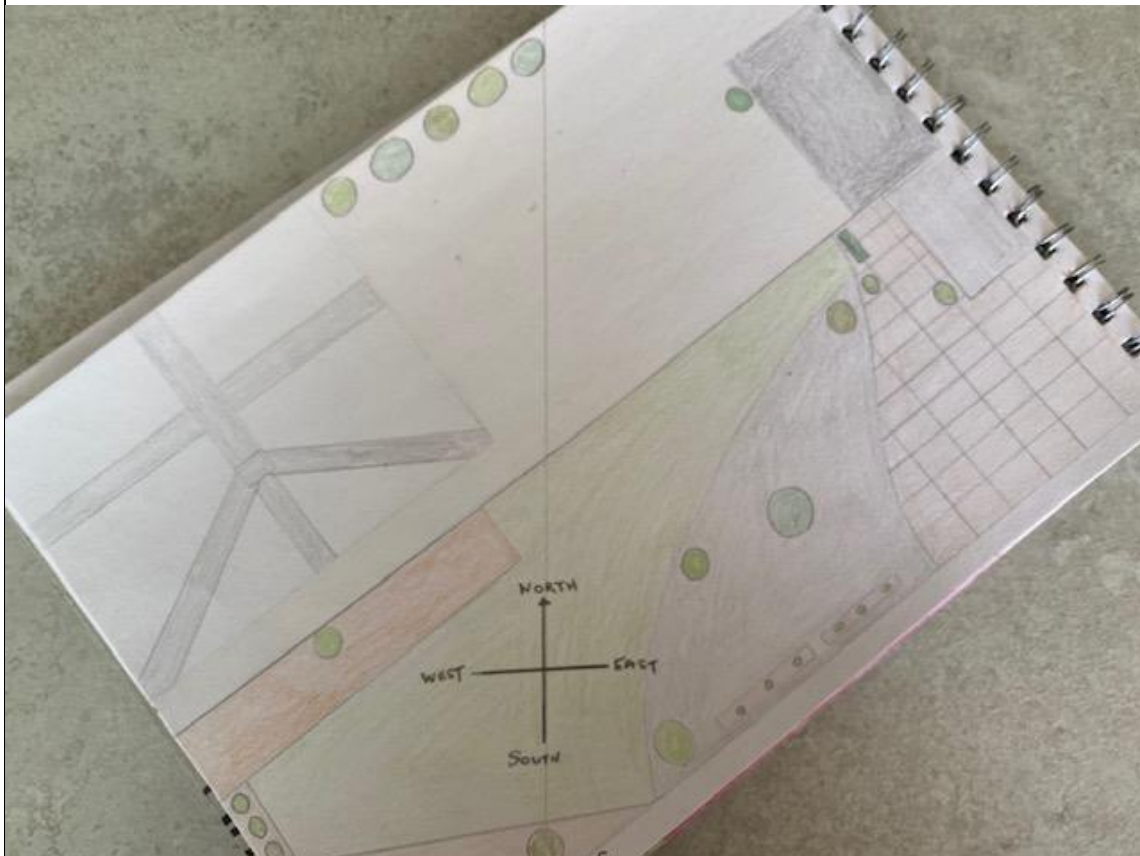


Activity	Adding compass points to your map.	Date	30/3/20
----------	------------------------------------	------	---------

### Aim/Activity and Instructions.

Take the map that you created on Day one, or do a fresh one of your home and garden and add the compass points to it. You may also add numbered Grid lines to it, splitting it into equal squares which give it a scale. This will allow you to work out the grid references of parts of your garden.

Here is one that Mr Bradley put together.



There are lots of ways to find North without compass.

<https://360.here.com/2015/05/29/5-ways-to-find-north-without-a-compass/>

or

<https://www.youtube.com/watch?v=WUSx0BHJTJ8>

### Learning Outcomes:

Navigation

Finding your way through through life!

### Resources:

Whatever you can find to help you.

### Key Risk and Controls:

If going outside your home, take an adult with you.

Follow all normal Covid 19 practice and normal behaviours for being in public places. Stay safe.

### How to share your learning:

Once you have completed this task, share the results to [sjb@boltonschool.org](mailto:sjb@boltonschool.org) or ask a family member to put it on Twitter and Tag us in

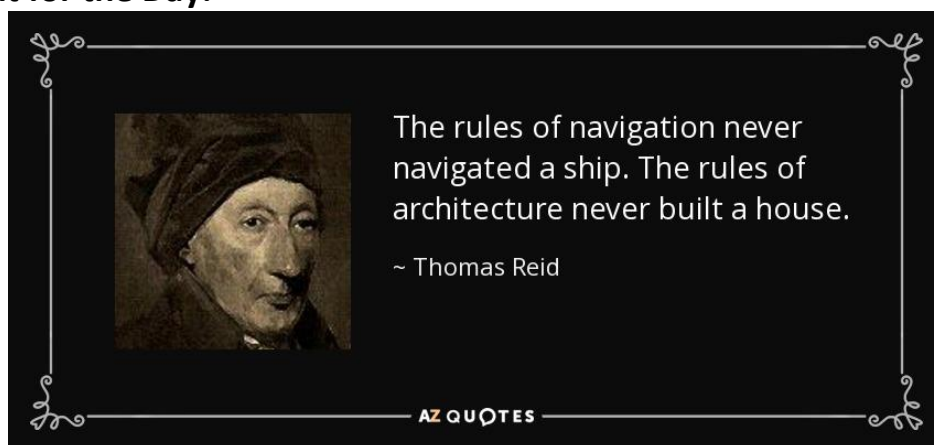
Share your results and videos to us on:

@BoltonOutdoor and @Patterdale\_Hall our Twitter

@PatterdaleHall for our Facebook

@patterdale\_hall for our Instagram

### Thought for the Day:



**Disclaimer:** Please undertake this activity under the direction of a competent adult agreed by your parents/carers. Be sensible and careful. Patterdale Hall and Bolton Outdoors cannot take responsibility for you on these activities, they are meant as a guide only.

***Please get some fresh air, stay safe, have fun and share your learning and outcomes with others.***